

The best solution to present all your information online

CMS G3 has been developed for over 10 years by INM AG.

Companies like MIGROS, Brother and Blacksocks use CMS G3 in their Internet and Intranet strategies.



INM AG

Wetzikon Office

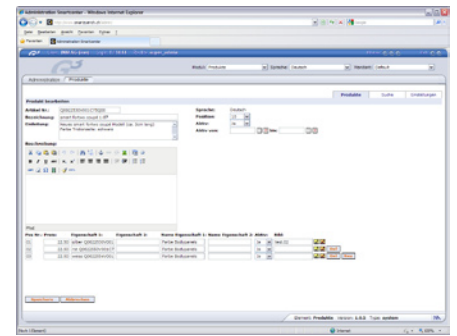
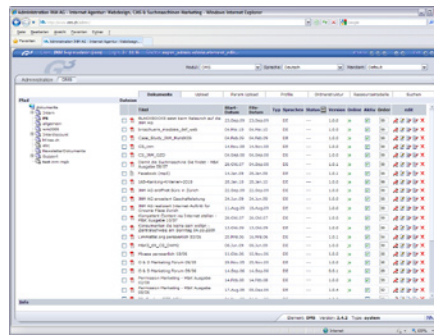
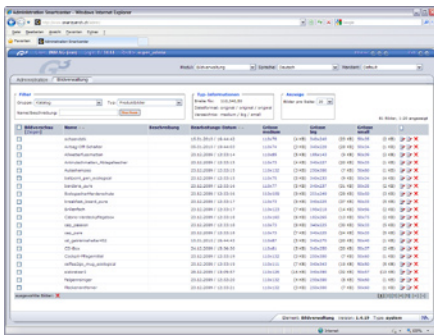
Usterstrasse 202
CH-8620 Wetzikon

T +41 44 394 50 50
F +41 44 934 50 55

info@cms-g3.ch
www.cms-g3.ch

Zürich Office

Hotzestrasse 33
CH-8006 Zürich



Introduction & Overview

The G3 front-end and standard features form the core of our CMS solution.

Below is a sample of the most important functions in the Overview:

- > Create, Configure and Edit Pages (Including Publishing Date)
- > Attach Images and Graphics
- > Copy, Paste and Edit Containers
- > Add Menu Items with Links to Pages, Websites, Etc.
- > Multilingual Admin Area (EN,DE,FR,IT)
- > Integrated Text Editor, Including Layout Design (text and Graphics)
- > Preview Pages Before Publishing
- > Insert Links, Documents, URLs, Email Addresses, Etc.
- > Simple Document Upload
- > Client Support

Flexibility

The G3 platform has been designed to ensure each customer solution can be modularly built. Since each module is **completely independent**, modules can be combined to meet the exact needs of the customer.

Integrating additional modules will not affect pre-existing modules or the currently running system.

Individual modules have several features that can be **individually activated**.

Complete scalability is guaranteed, not only for the individual modules, but also for the features within each module.

Drop-down menus in the admin area allow direct access to the most important modules and functions. Newly added modules are also directly accessible from the menus.

Modules

Sample of our Module list:

- > Global Contents, Glossary, Job, news, References, History, Employees, Social Networks
- > DMS/MMS, Documents, Doc. Search, Drill-down,
- > Image Gallery
- > Forum, Guestbook, FAQ, Form Generator, Feedback
- > User Configuration, User Status
- > E-Shop-Module with Shopping Cart and Payment
- > Product Catalog Module, including ERP Interface, Features, Brands, Options and Themes
- > Flip-book
- > Multimedia
- > Mailing, XMS Cross-Link (Module & Media)

For more than 10 years, our proprietary development has been based on the needs of the market and individual customer requirements. This provides maximum flexibility, evident in the tailored solutions that precisely meet your needs.

Information Architecture

To realize an Internet/Intranet solution that is tailored to your needs, a basic installation of the G3 Platform is required. G3 is a proprietary development of INM AG and serves as the operating system for all front-end and standard functions that are integrated into a customer solution.

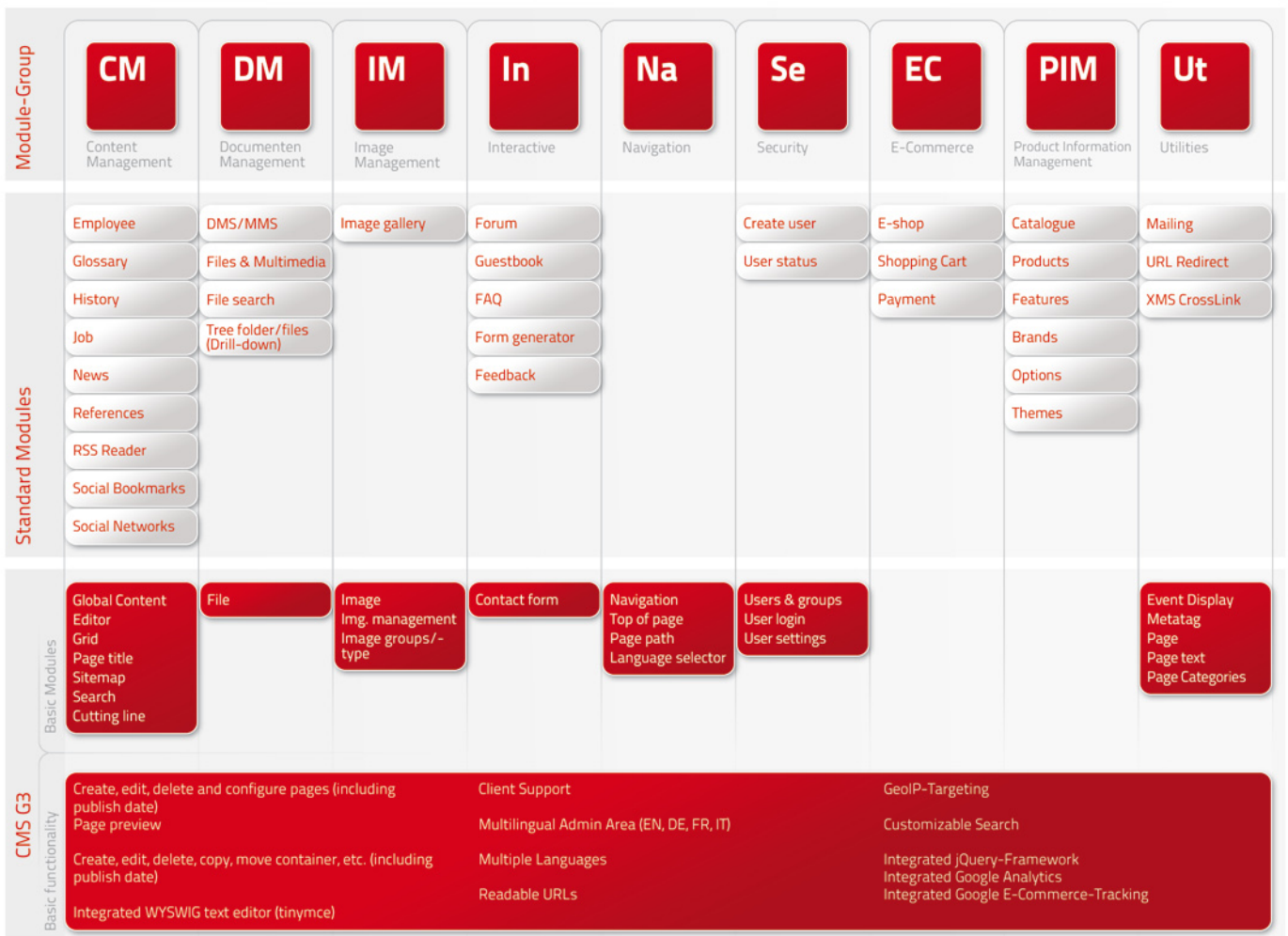
Functional enhancements can be made by programming or creating specifically tailored operational functions. Integrating additional functions is made much easier due to the modular design.

All content can be stored on a central database server to be available for access by other modules and functions anytime, anywhere. Changes can be ran centrally.

The figure below shows the Content Management System CMS G3 Base Modules and the complete range of modules currently available. Choose the modules to create a system tailored to your individual needs.

The G3 concept was engineered to keep Design, Functions and Content as separate as possible. This allows the system to be extremely flexible and easy to expand (scalability).

Outline of the CMS G3 structure



G3 Hardware Requirements

Web/Application Server	Simple Processor Pentium 800, Hard Drive Capacity ca. 100 MB, Memory ca. 2 GB RAM
Database Server	Various database software can be used. Mostly SQL2000 Server from Microsoft and Oracle Products are used.

G3 Web, Application & Database Server Requirements

Application Server ColdFusion	Database MS SQL
Web Server Apache	MS Windows Server
OS WIN / LINUX	

G3 Hosting Variations

*we are happy to provide database replication and clustering upon request.

Load Balanced	N (3) CF Server in Cluster 1 DB Server*
Non-Load Balanced	1 CF Server (+ 1 CF Server Standby) 1 DB Server*

Supported Browsers

Front-end	Requirements
WIN/OS X	IE 7+, Firefox2.x+, Chrome 3.x, Opera 9.x, Safari 3.x
Administration	Requirements
Client/Browser	Internet Explorer 7.0+ or Firefox
Screen Resolution	1024x768
Flash Elements	Free Plugin from Macromedia must be installed
Javascript and Cookies	Must be enabled in the Browser

Clients That Trust Us

Sample of our client list

